

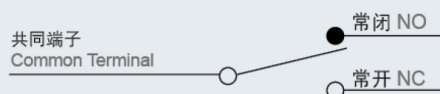
CZ-7 卧式限位开关 Horizontal Limit Switch



特点 Features

- 引动器种类广泛，其中包含动作位置可调整的款式（如 CZ-7121）
- 外壳包覆强化塑胶、防水、防油，较 CM 型卧式限位开关有更高的机械强度，耐冲击
- Various actuators and some with adjustable operating position (such as CZ-7121)
- Shell covered with intensive plastic for water-proof and oil-proof. The mechanical strength is better than CM series of horizontal limit switch

接点型式 Contact Form



额定值 Ratings

额定电压 Rated Voltage	非电感性负载 Noninductive Load (A)				电感性负载 Inductive Load (A)			
	电阻性负载 Resistance Load		灯泡负载 Lamp Load		电感性负载 Inductive Load		马达负载 Motor Load	
	NC	NO	NC	NO	NC	NO	NC	NO
125VAC	10	3	1.5	10	5	2.5		
250VAC	10	2.5	1.25	10	3	1.5		
480VAC	3	1.5	0.75	2.5	1.5	0.75		
8VDC	10	3	1.5	6	6	5		
14VDC	10	3	1.5	6	6	5		
30VDC	8	3	1.5	6	5	2.5		
125VDC	0.5	0.4	0.4	0.05	0.05	0.05		
250VDC	0.25	0.2	0.2	0.03	0.03	0.03		

- 注 1、电感性负载：功率因素=0.4; 时间常数=7msec。
 2、灯泡负载之突入电流为稳定状态电流之 10 倍。
 马达负载之突入电流为稳定状态电流之 6 倍。
 3、带弹簧系列产品，操作体的使用范围为从弹簧的前端到弹簧全长的 1/3 以内。
- NOTES: 1. Inductive load has a power factor of 0.4 min.(AC) and a time constant of 7 msec.max.(DC).
 2. Lamp load has an inrush current of 10 times the steady-state current, while motor load has an inrush current of 6 times the steady-state current.
 3. Product with spring, its usable range of operating part is within one third of the whole spring length from the front end of spring.

动作特性 Operating Characteristics

型号	Model	CZ-7	CZ-7100	CZ-7110	CZ-7310	CZ-7311	CZ-7312	CZ-7120	CZ-7140	CZ-7121	CZ-7141	CZ-7124	CZ-7144	CZ-7166
操作力	Operating force	OF 最大(Max.)	600g	600g	600g	600g	600g	150g	220g	180g	240g	200g	280g	120g
回弹力	Release force	RF 最小(Min.)	100g	100g	100g	100g	100g	40g	60g	50g	80g	60g	100g	
预行程	Pre-travel	PT 最大(Max.)	2.0mm	2.0mm	2.0mm	2.0mm	2.0mm	13.5mm	8.5mm	11.0mm	6.5mm	11mm	6.5mm	250mm
过行程	Over travel	OT 最小(Min.)	0.8mm	5.0mm	6.0mm	6.0mm	6.0mm	4.0mm	2.5mm	3.0mm	2.0mm	3.0mm	2.0mm	11mm
行程移动分辨率	Movement differential	MD 最大(Max.)	0.8mm	0.8mm	0.8mm	0.8mm	0.8mm	3.2mm	2.0mm	2.4mm	1.5mm	2.4mm	1.5mm	
动作位置	Operating position	OP(mm.)	30.5±0.8mm	44±1.2mm	21.8±1.2mm	33.3±1.2mm	33.3±1.2mm	25±1mm	25±1mm	40±1mm	40±1mm	50±1.2mm	50±1.2mm	
自由位置	Free Position	FP						35mm	32mm		46mm		56mm	

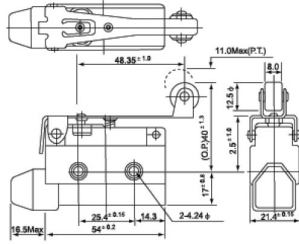
规格 Specifications

操作速度 Operation speed	0.05mm 至 0.5m/s 0.05mm-0.5m/s
动作频率 Operating frequency	电气: 20 次/分 Electrical: 20 operations/min.
接点电阻 Contact resistance	25mΩ 以下 (初期) 25mΩ max. (initial value)
绝缘电阻 Insulation resistance	100MΩ 以上 (在 500VDC 以下) 100mΩ above(at 500VDC)
电介强度 Dielectric strength	非连续端子间 1,000VAC, 50/60Hz 持续 1 分钟 1000VAC, 50/60 Hz for 1 minute between terminals of the same polarity
	载电流与无载电流零件间 1,500VAC, 50/60Hz 持续 1 分钟 1500VAC, 50/60 Hz for 1 minute between current-carrying and non-current-carrying metal parts
振动 Vibration	端子和接地之间 1,500VAC, 50/60Hz 持续 1 分钟 1500VAC, 50/60 Hz for 1 minute between each terminal and ground
	误动作耐久: 10 至 55Hz, 1.5mm 双振幅 Malfunction Duration: 10-55Hz, 1.5mm double amplitude
冲击 Shock	机械耐久: 1,000m/Sec ² (约 100G' S) 误动作耐久: 300m/Sec ² (约 30G' S) Mechanical durable: 1,000m/Sec ² (about 100g's) Malfunction: 300m/Sec ² (about 30g's)
	周围温度 Ambient temperature
湿度 Humidity	< 95% RH
电气寿命 Electrical life	500,000 次以上 500,000 operations above
重量 Weight	约 60g About 60g

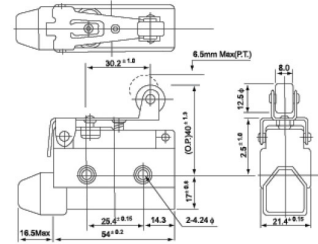
CZ-7 卧式限位开关 Horizontal Limit Switch

外观和尺寸 Appearance and Dimension

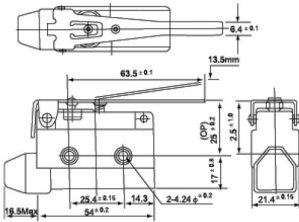
CZ-7121



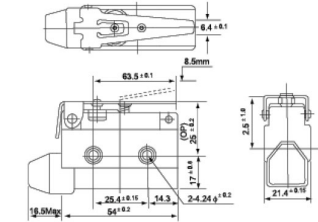
CZ-7141



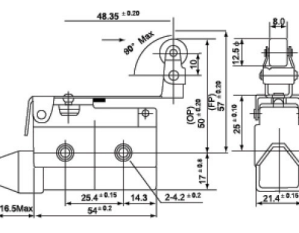
CZ-7120



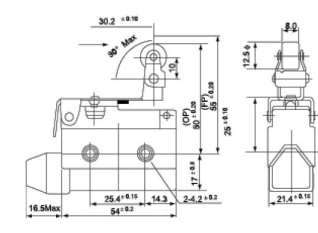
CZ-7140



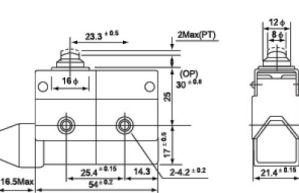
CZ-7124



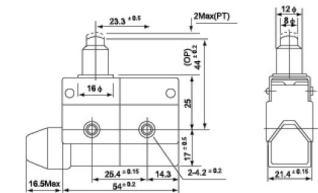
CZ-7144



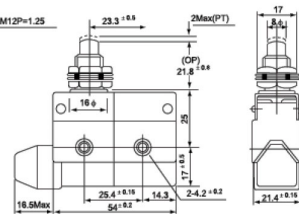
CZ-7100



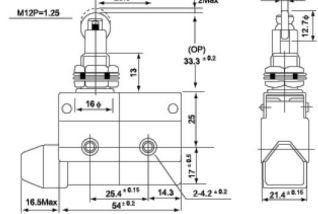
CZ-7110



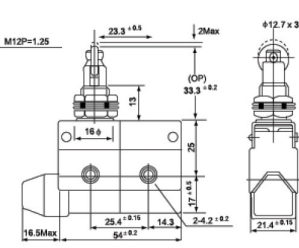
CZ-7310



CZ-7311



CZ-7312



CZ-7166

