


主要技术参数 Technical Parameter

保护等级/Degree of Protection	IP67
触点类型/Contact Type	1 NO/1NC 可定制
最大电压/Maximum Voltage	250V AC/DC
热流/Thermal Current	2A
最小负载/Minimum Applicable Load	5V AC/DC, 1mA
触点材料/Contact material	Silver plated
端子形式/Terminal Style	.110" Solder/ Quick Connect
运行温度/Operating Temperature	-25° to +55°C
操作湿度/Operating Humidity	45 to 85% RH
接触电阻/Contact Resistance	50MΩ maximum
绝缘电阻/Insulation Resistance	100MΩ minimum (500V DC megger)
震荡电阻/Vibration Resistance	10 to 55Hz, amplitude 1.2mm p-p
保护等级/Degree of Protection	>10g
电气寿命/Electrical Life	100,000 operations minimum (at full rated load)
机械寿命/Mechanical Life	Maintained: 1,000,000 operations minimum Momentary: 1,000,000 operations minimum
耐压/Dielectrical Life	Switch Unit: 2,000V AC, 1 min. between live/dead part and terminals of different poles; 1,000V AC, 1 minute between terminals of the same pole; 1,500V AC, 1 minute between contact and lamp terminals. Illumination Unit: 2,000V AC, 1 min. between live part/ground
锡焊温度/Soldering Temperature	20W/5 seconds or 260°C/3 seconds

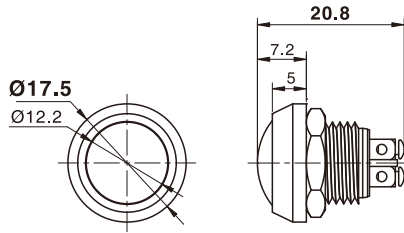
注：* 详细型号分类参考(金属按钮开关命名方式表)

Ø12经济型金属按钮 Metal Waterproof Push Button Switch

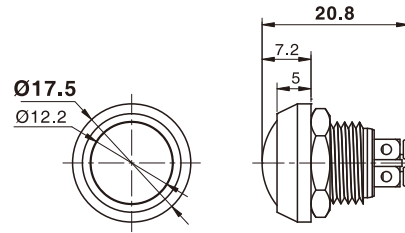
名称/外观 Product appearance	安装方式 Install Style	操作类别 Operation	触点 Contact	产品型号 Model	颜色 Color	额定电压 Rated Voltage	外壳材料 Crust Material
弧面圆形 / Domed round 	螺丝型 Screw Type	自复 Momentary	1NO+1NC	EJ12-231AS	R 红色/Red G 绿色/Green B 蓝色/Blue W 白色/White Y 黄色/Yellow S 金属色/Metal	D:24VDC E:12VDC F:6.3VDC A1:110VAC A2:220VAC	Nil:不锈钢 T:铜镀镍 A:铝 G:铜镀铬 B:铜镀黑色 Nil:Stainless steel T: Copper Plated Ni A: Aluminium G: Copper plated Cr B: Copper plated with black
弧面圆形 / Domed round 	螺丝型 Screw Type	自复 Momentary	1NO+1NC	EJ12-231AY			
弧面圆形 / Domed round 	焊线型 PCB Type	自复 Momentary	1NO+1NC	EJ12-231PBA			

名称/外观 Product appearance	带灯形式 Illuminated type	操作类别 Operation	触点 Contact	产品型号 Model	颜色 Color	额定电压 Rated Voltage	外壳材料 Crust Material
弧面圆形 / Domed round 	螺丝型 Screw Type	自复 Momentary	1NO+1NC	EJ12-231ARA	R 红色/Red G 绿色/Green B 蓝色/Blue W 白色/White Y 黄色/Yellow S 金属色/Metal	D:24VDC E:12VDC F:6.3VDC A1:110VAC A2:220VAC	Ni:不锈钢 T:铜镍 A:铝 G:铜镀铬 B:铜镀黑色 Ni:Stainless steel T: Copper Plated Ni A: Aluminium G: Copper plated Cr B: Copper plated with black

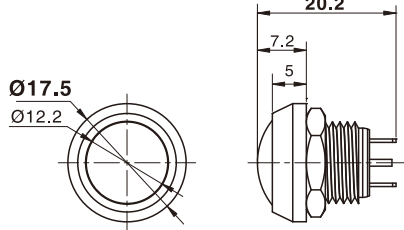
弧钮螺丝型



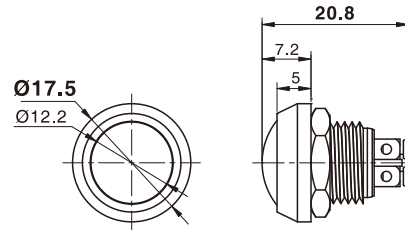
弧钮螺丝型



弧钮焊线型(铝)



弧钮螺丝型(铝)



J 系列三色灯金属按钮

带电源符号按钮

金属信号灯

经济型金属按钮

金属按钮

Ø12

经济型金属按钮

Ø16

经济型金属按钮

Ø19

经济型金属按钮

Ø22

经济型金属按钮